

The Opening of Evangeline

Precious Metals

The Canvas with Will Barnet

Maine HOME + DESIGN

June 2008

MH+D Exclusive

AIA Award-Winning Designs

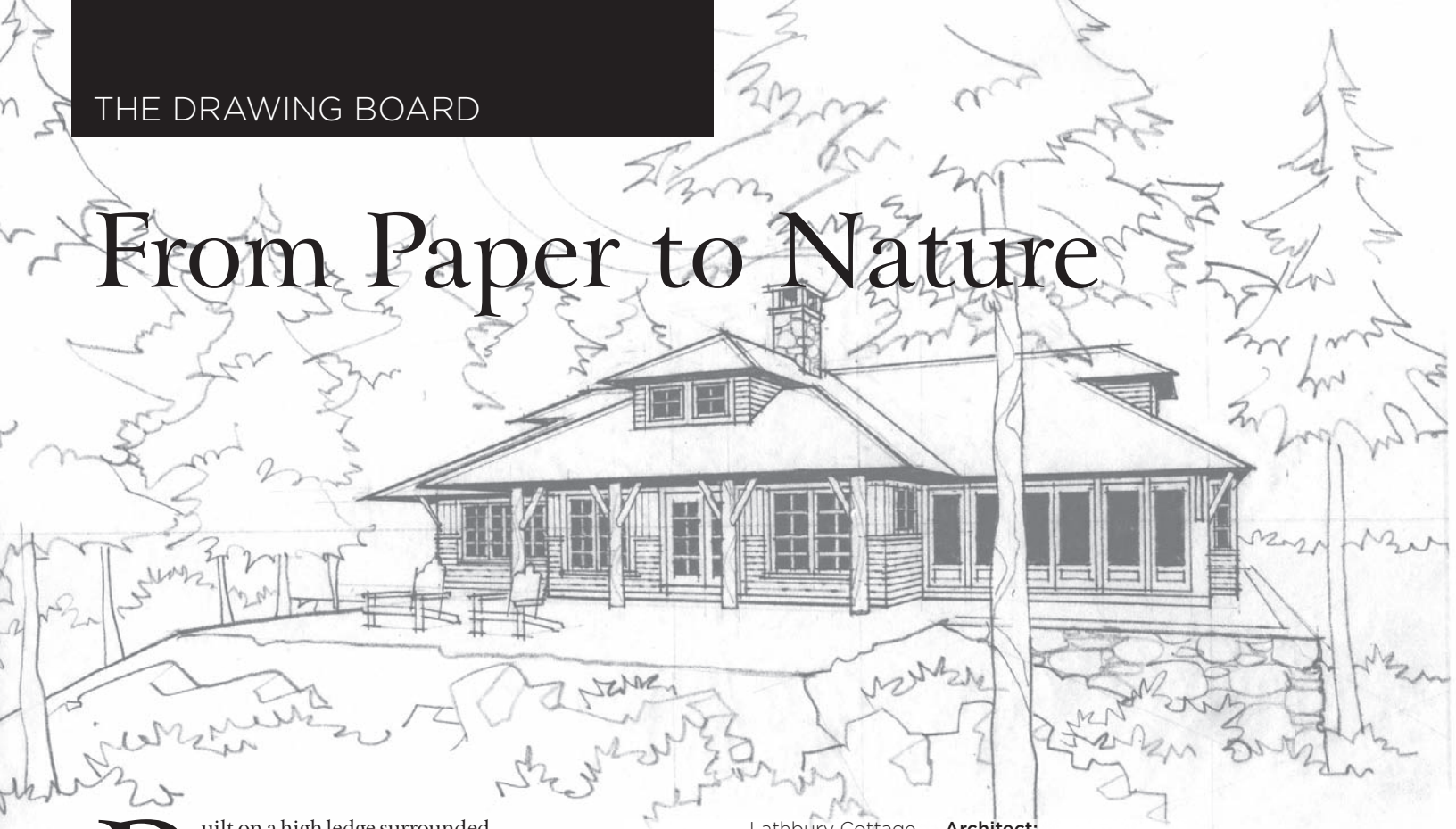
Cape Elizabeth

A Shingle Style Home
with Cinematic Roots

+

A Waterfront Home Reinvented
in Boothbay Harbor

From Paper to Nature

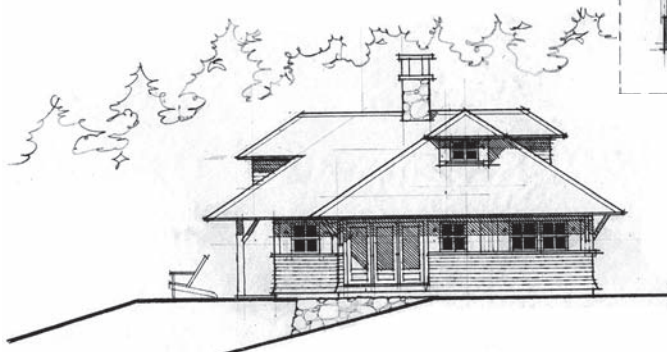
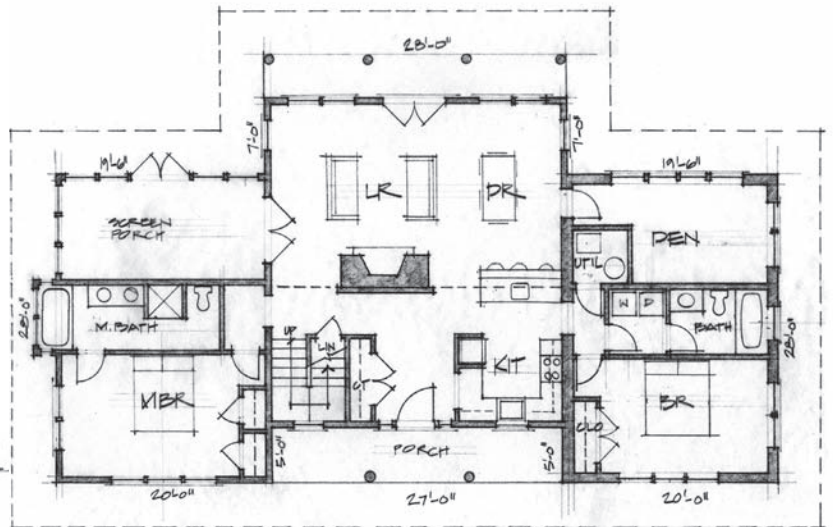


Built on a high ledge surrounded by spruce, with a long westerly view down to the water, this cottage was designed by John and Matthew Silverio to be a new part of an existing summer colony of rustic log cabins. The main spaces occupy the first floor, with only a loft studio on the second. A clearstory window lights the cathedral living room. The entire interior is paneled, with a large stone fireplace anchoring the design to the ledge. Peeled logs and dark-stained shingle siding evoke the woody feeling of a park lodge or camp building.

See Resources for more information. **MH+D**

Lathbury Cottage **Architect:**
Location: Linekin Bay **John Silverio Architects**

Square Footage **Builder:**
First Floor: 1,920 square feet **Eric Marden**
Second Floor: 280 square feet



MaineHOME+ DESIGN

75 Market Street
Suite 203
207-772-3373

www.mainehomedesign.com

If whole or part of this article is reproduced online, we ask that
a link back to MaineHOME+DESIGN be placed. Thank you.